

# Welcome to Toledo! We want to hear from you:



Please take this time to:

- Network and meet others
- Respond to our online survey
- Take part in our data walk exercise
- Put a sticker on our county map for your location

**Our program will begin at 10:00 am.**



**Roadshow  
LISTENING TOUR**



# Roadshow *LISTENING TOUR*



*Presented by*



## Welcome to Toledo!



# Welcome to Toledo!



**Lynanne Gutierrez**  
President  
Groundwork Ohio



**Rev. John Jones**  
President & CEO,  
HOPE Toledo



# Learn More Online

## **10:00 am: Welcome and Introductions**

- **Lynanne Gutierrez**, President, Groundwork Ohio
- **Rev. John Jones**, President & CEO, HOPE Toledo

## **10:25 am: Early Childhood Education Panel Conversation**

## **11:05 am: Remarks from Community Partner**

## **11:20 am: Maternal and Young Child Health Panel Conversation**

## **12:15 pm: Lunch and Table Discussion**



# Thanks to our Community Partners!



# We Want to Hear from You



Download Mentimeter Now to Engage

*Please go to  
**www.menti.com** and  
enter code **3730 3255** to be  
ready to participate!*



## Who We Are



Groundwork Ohio is a committed, **nonpartisan public-policy research and advocacy organization** formed in 2004 that champions high-quality early learning and healthy development strategies from the prenatal period to age 5, that lay a strong foundation for Ohio kids, families, and communities.

*We advance quality early childhood systems in Ohio by engaging, educating, and mobilizing diverse stakeholders and strategic partners to promote data-driven and evidence-based early childhood policies.*

[www.GroundworkOhio.org](http://www.GroundworkOhio.org)



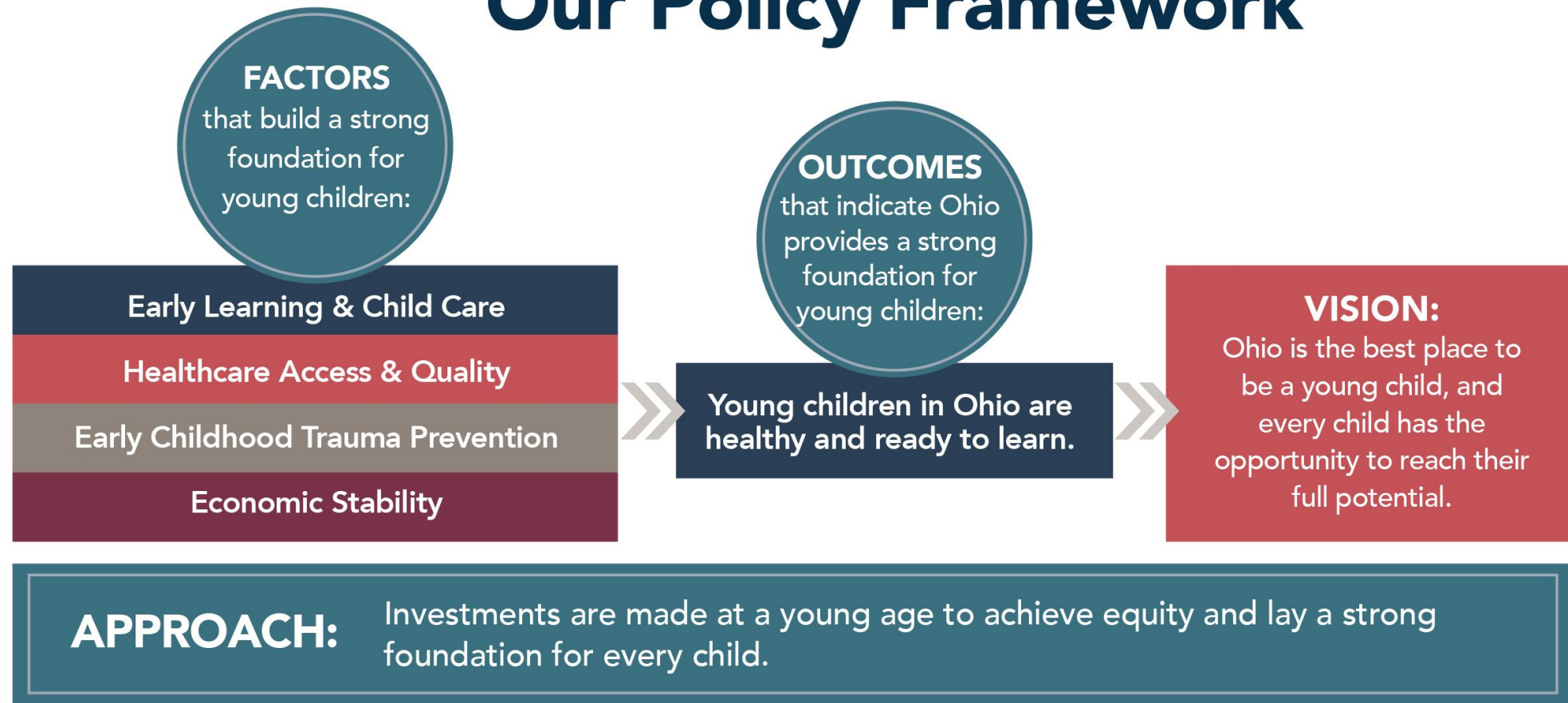
**Groundwork Ohio is leading a powerful statewide early childhood movement, securing state policy and investments to meet the growing needs of young children and families.**

**You play a crucial role in this movement, which transcends Ohio's policy landscape and political climate.**



# Our Policy Framework

## Our Policy Framework

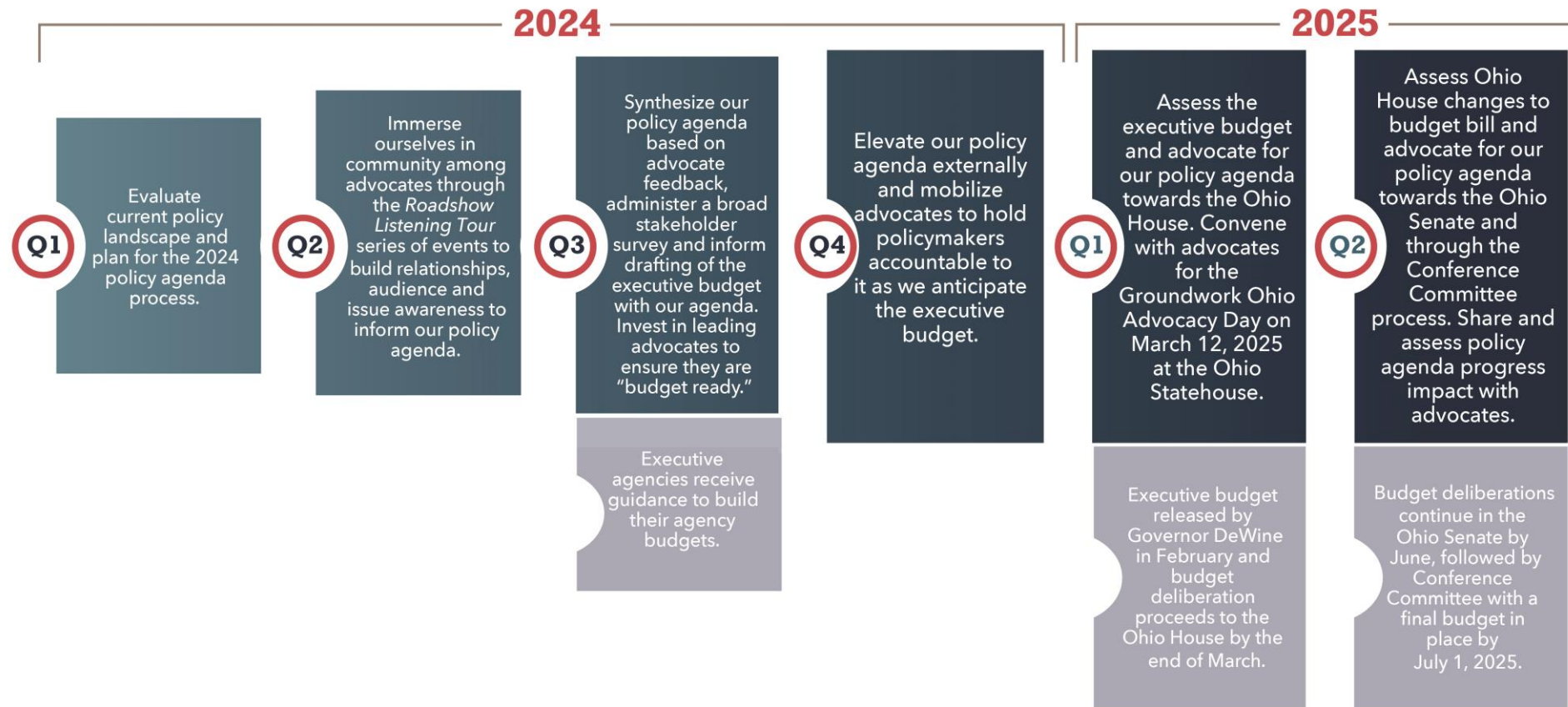


## Groundwork Ohio's Prenatal-to-5 State Policy Agenda Process



When it comes to *how* we determine policies to advance our mission, Groundwork deploys a robust and adaptable process to craft our policy agenda, uniquely unfolding every two years. This flexibility allows us to respond swiftly to challenges and seize opportunities.

# What does our policy process look like in 2024?



You are here!

# Roadshow ***LISTENING TOUR***



# **Economic Stability**

**Ohio ranks 39th**  
for early childhood poverty.

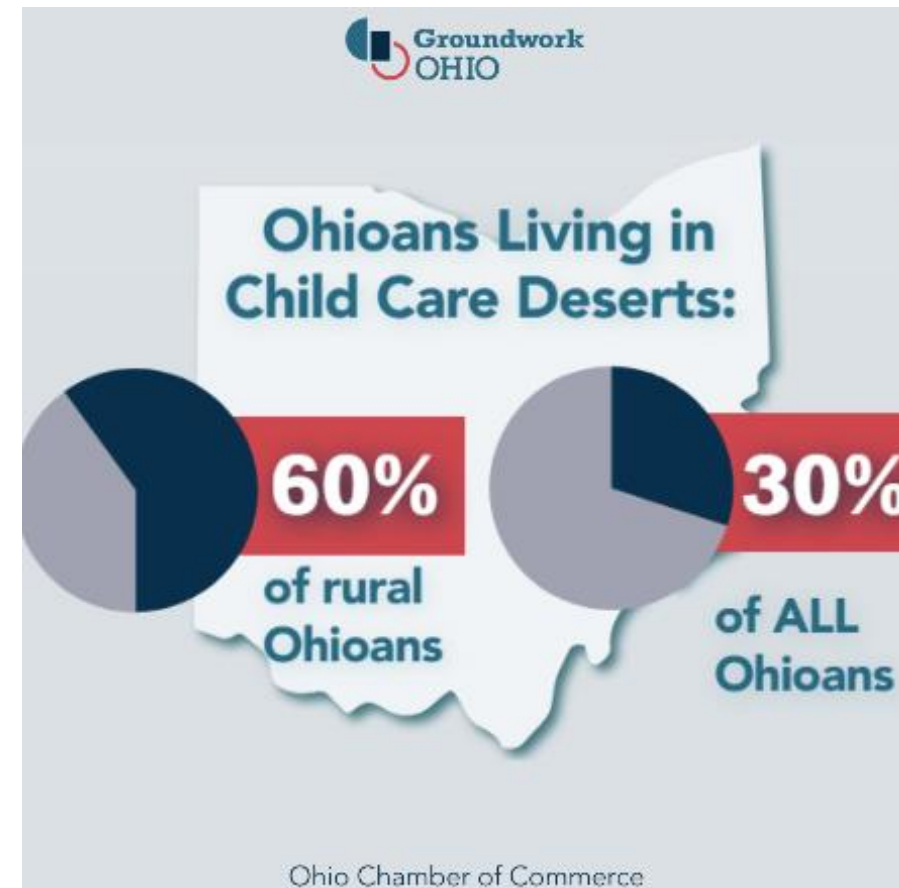
**1 in 5** young children live in poverty.

# Early Learning & Child Care

79%

of Kindergartners with low  
incomes are not ready to learn.

# Access to Affordable, Quality Child Care is Limited



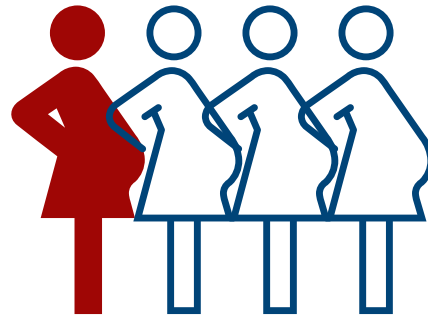
# Healthcare Access & Quality

4 in 10

low-income babies aren't  
accessing necessary preventative  
care at well-visits.

# Health Care: Too Many are Missing Vital Preventive Care

In Ohio, nearly 1 in 4 of pregnant women did not receive timely prenatal care.



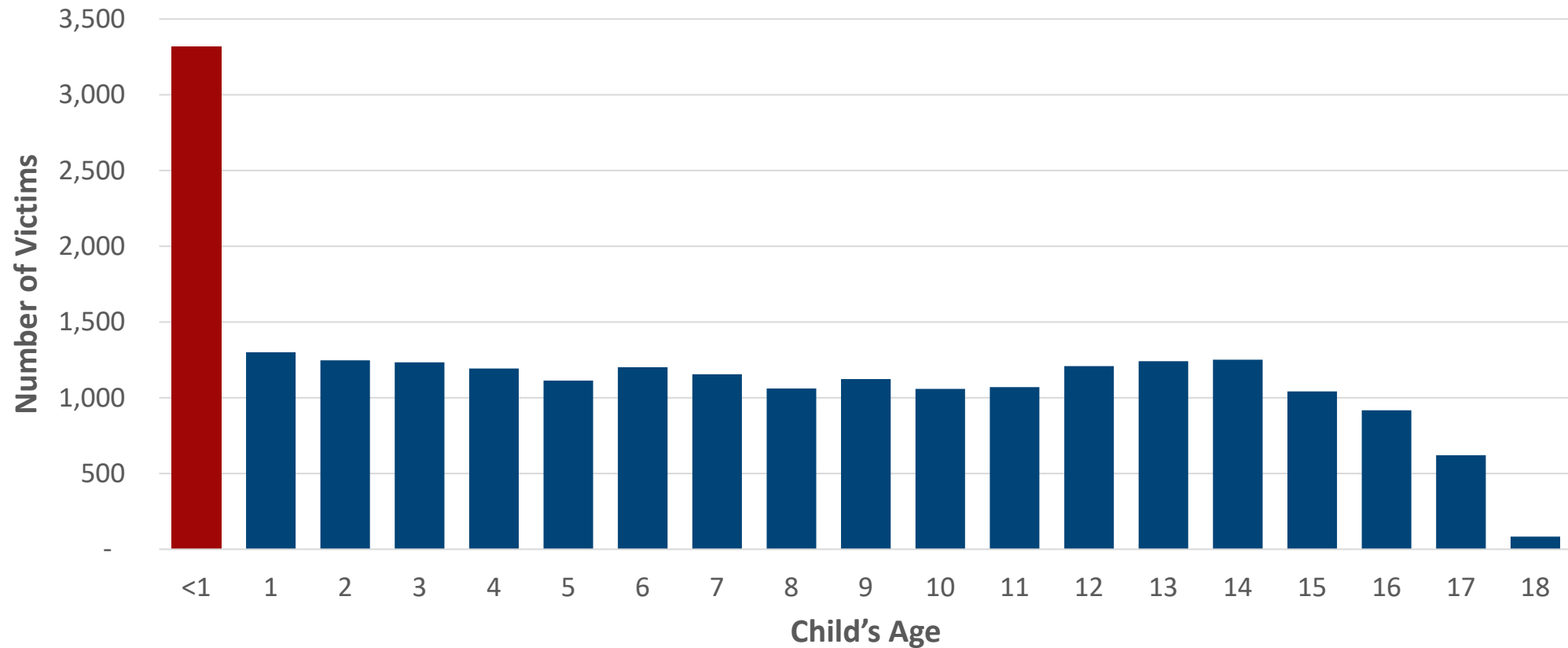
*Source: Timely Prenatal Care: CDC Wonder 2020; Well Child Visits: CMS Children's Health Core Set 2020*

# Early Childhood Trauma Prevention

Ohio ranks 31st  
for infant maltreatment.

Too many babies are experiencing  
abuse & neglect in our state.

# Child Well-being: Ohio's Youngest Children are Most Vulnerable to Maltreatment



**Source:** Ohio data, from U.S. Department of Health & Human Services, Administration for Children and Families, Administration on Children, Youth and Families, Children's Bureau. (2024). Child Maltreatment 2022. Online at <https://www.acf.hhs.gov/cb/data-research/child-maltreatment>

**Mentimeter Exercise: As you consider the state of young children in Ohio, what are the first words that come to your mind**



# Meet our Early Childhood Education Panel



**Elisa Huss-Hage**

Director, Early Childhood  
HOPE Toledo



**Dr. Kristi Hannan**

Associate Director of Early  
Childhood, Lucas Co. Family  
and Children First Council



**Stephanie D. Kynard**

Owner/Operator  
Kynard's Child Development Center,  
LLC



**Michelle Bieber**

Owner, Over the Rainbow Early Learning Center  
President, Ohio Association of Child Care Providers



**Dr. Veronica Motley**

Superintendent  
Sylvania Schools

# Community Partner Remarks



**Angela M. Mingo, MCRP**  
Vice President, Development  
and Corporate Affairs



**Dr. Mary Kay Irwin**  
Senior Director, School-Based, Nationwide  
Children's Hospital

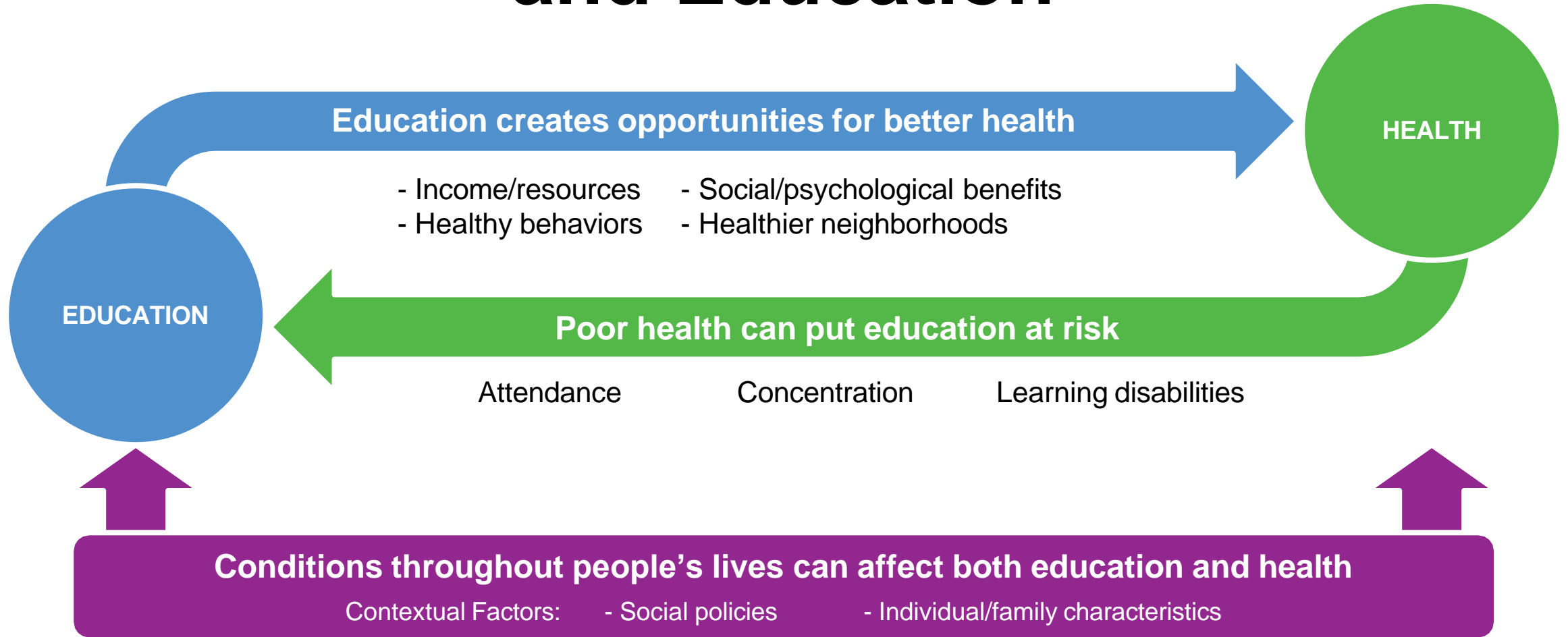


# Leveraging the Intersection of Health & Education in Early Learning Partnerships



Mary Kay Irwin, EdD  
Senior Director, School Health Services  
Board Chair, Action for Children

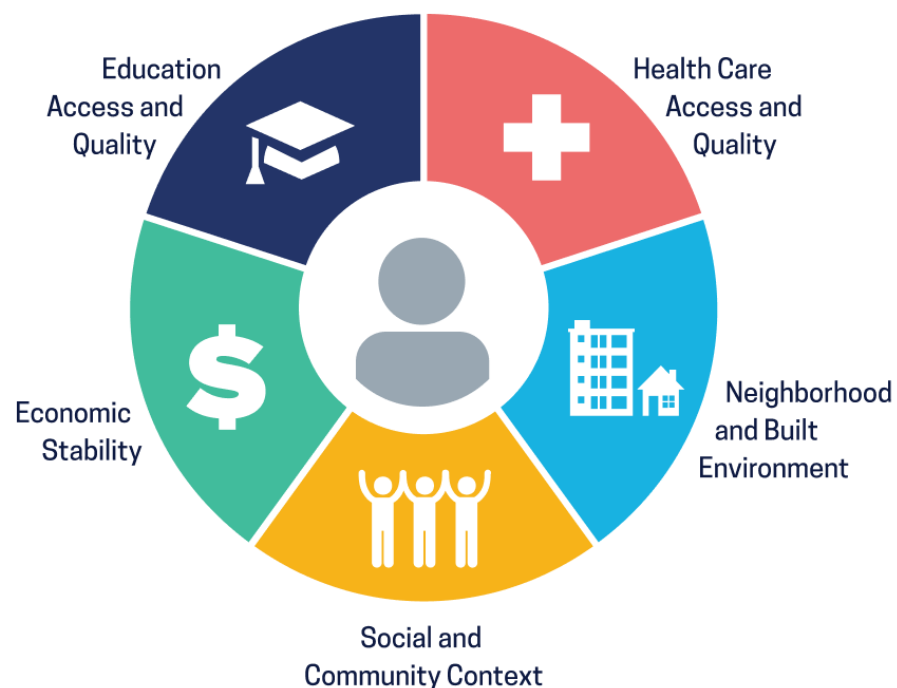
# Relationship between Health and Education



Graphic adapted from:  
Virginia Commonwealth University. (2015, Feb. 13). *Why Education Matters to Health: Exploring the Causes*. Center on Society and Health. <https://bit.ly/3LEuLl0>

# Patient/Student Centered Support Frameworks

*Social Determinants of Health*

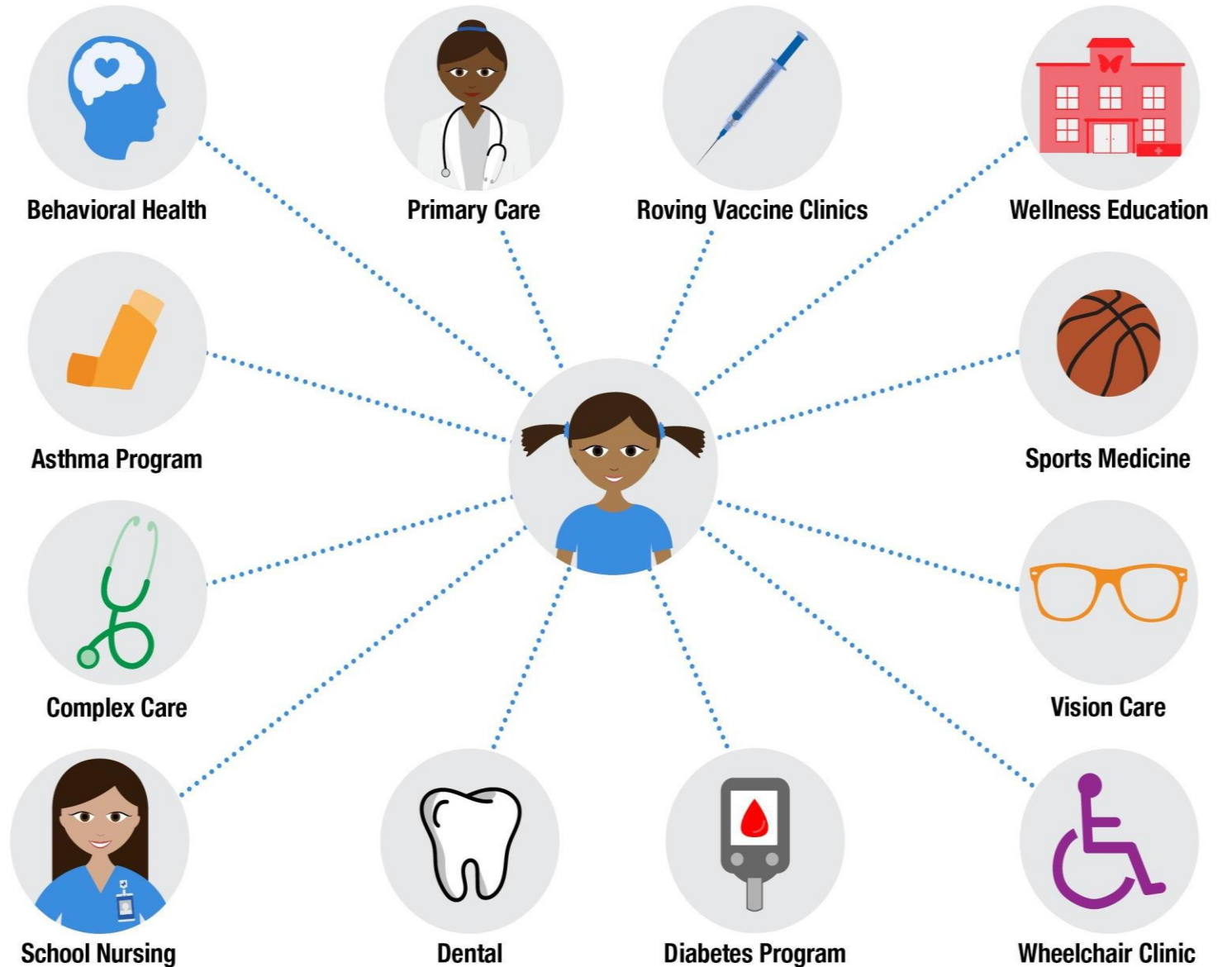


*Ohio's Whole Child Framework*



# Whole Child Model

## School Health Services



# School Health Consultation

**Goal:** Build local capacity to address health inequities by improving access

## Reach to Date

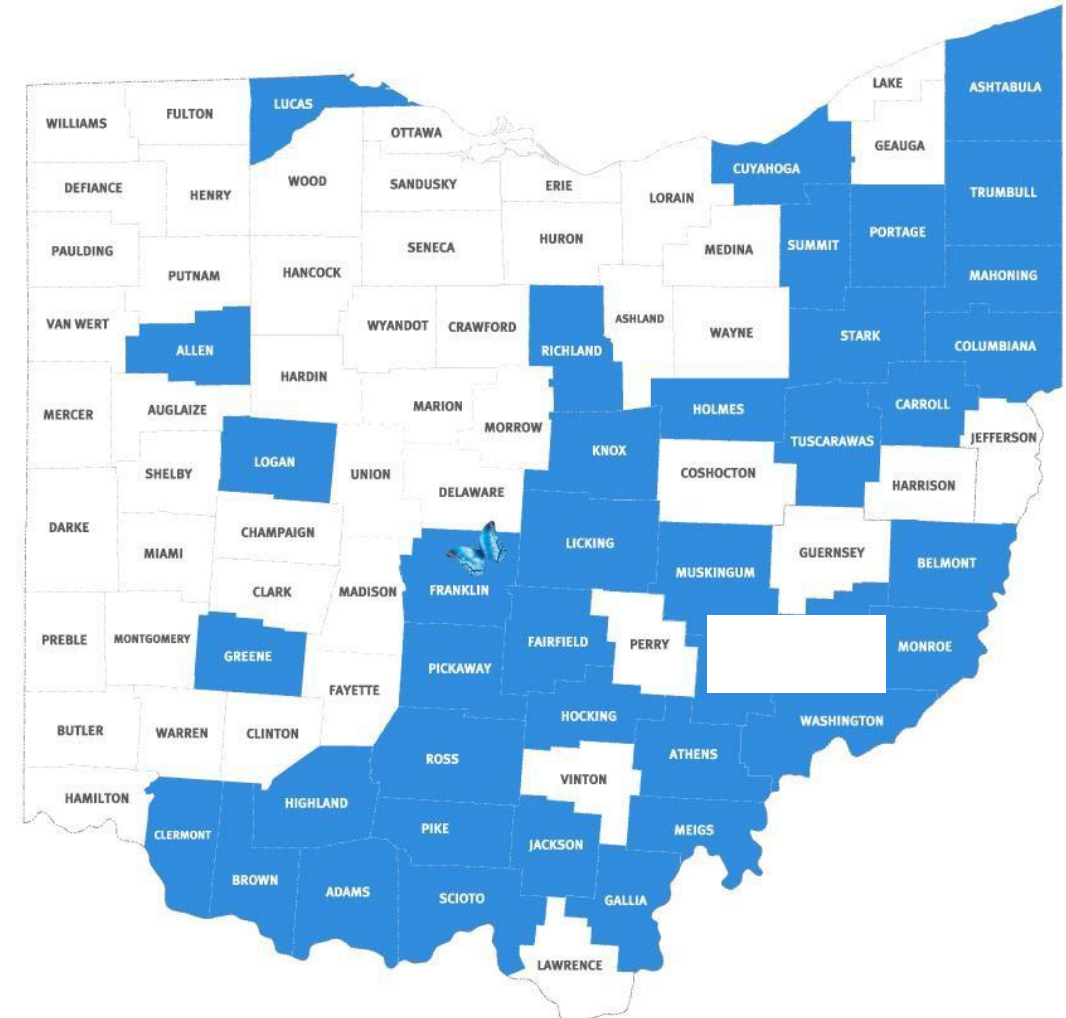
### 62 School Districts

- ~270,000 students
- 44 Rural
- 6 Suburban
- 11 Urban

### 26 Healthcare Partners

- 12 Hospitals
- 12 FQHCs
- 2 Independent

Across **38** Ohio Counties



# Appalachian Community Grant Program

## APPALACHIAN CHILDREN'S HEALTH INITIATIVE

**20**   
COUNTIES SERVED

**16**   
HEALTHCARE PARTNERS

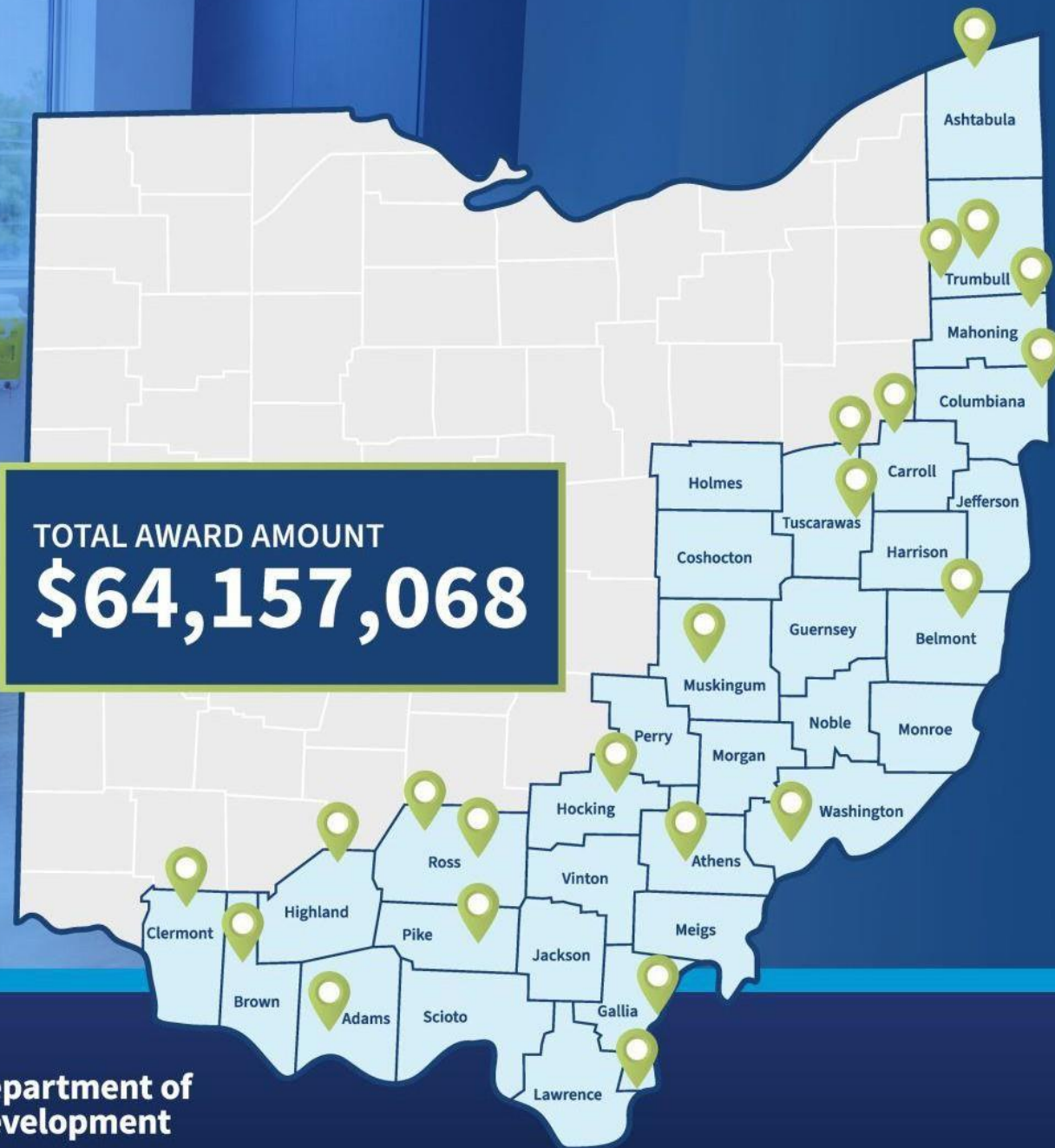
**34**   
SCHOOL DISTRICTS

**36**  
COMMUNITIES  
  

OVER  
**61,000**   
STUDENTS SERVED

ESTIMATED TO REACH  
**375,000**    
PEOPLE IN APPALACHIAN OHIO  

TOTAL AWARD AMOUNT  
**\$64,157,068**



**MIKE DEWINE**  
GOVERNOR OF OHIO



**JON HUSTED**  
LT. GOVERNOR OF OHIO



**Department of  
Development**

# School Based Primary Care



Primary Care

## 2 Mobile Care Centers



## 17\* School-Based Health Centers (SBHCs)



Before



After



## Pre-K Classrooms & Community Center

### Partners:

- Early Childhood Providers
- The City's Education Dept
- CCS
- NCH School Health
  - Primary Care
  - Early Childhood Mental Health



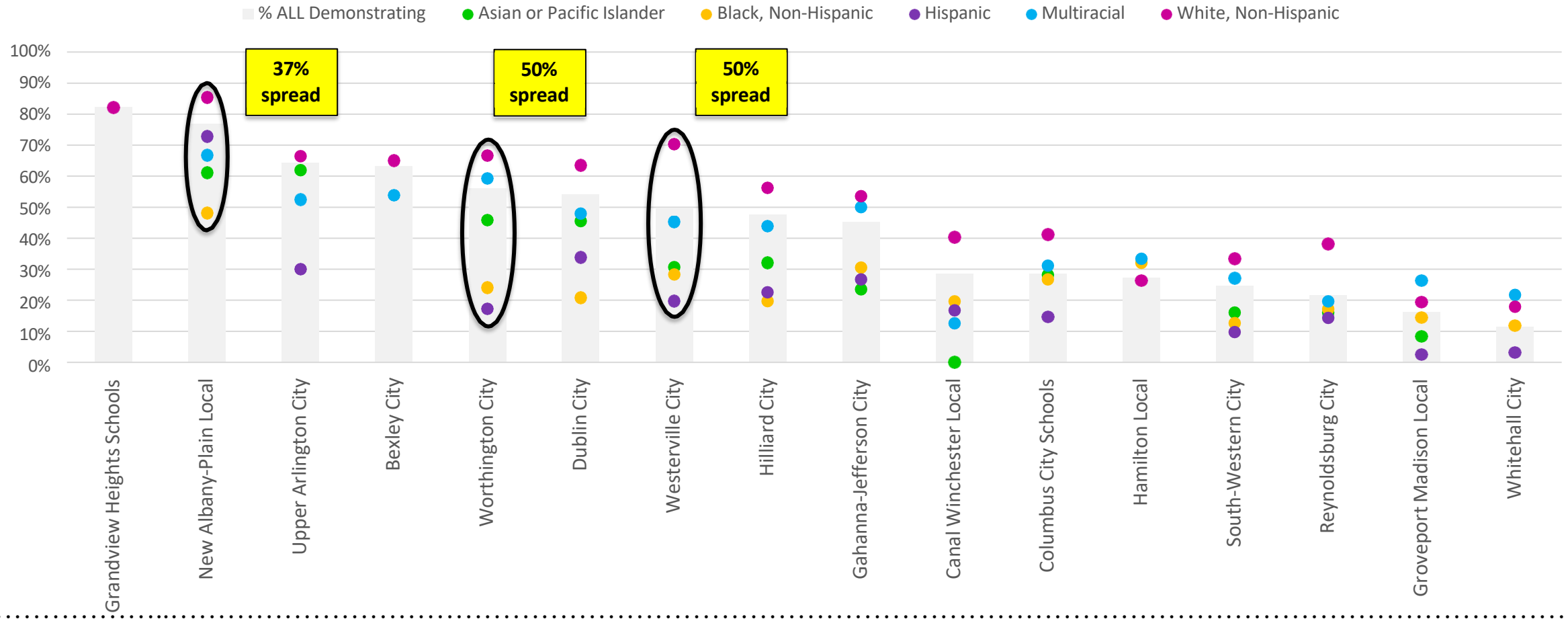
# Population Health



✓ ★ SHS interventions to support  
SHS leads as content expert

# Disparity in KRA Scores

% demonstrating readiness, KRA 270+  
2022-2023



# KRA/ASQ Comparison

## Pilot Study:

- N = 110 students/patients
- Compared Ages and Stages Questionnaire (ASQ) with the Kindergarten Readiness Assessment (KRA) score

## Results:

- 39 students failed the KRA
- Only 3 of those students also did not pass the ASQ
- There was no correlation between the ASQ and the KRA. Passing or failing the ASQ did not predict whether you would pass or fail the KRA

**Question:** Are developmental screens traditionally given by pediatricians enough?

**Perspective:** Perhaps we need another tool to identify school readiness in addition to developmental delay?

.....

# Key Drivers of Kindergarten Readiness

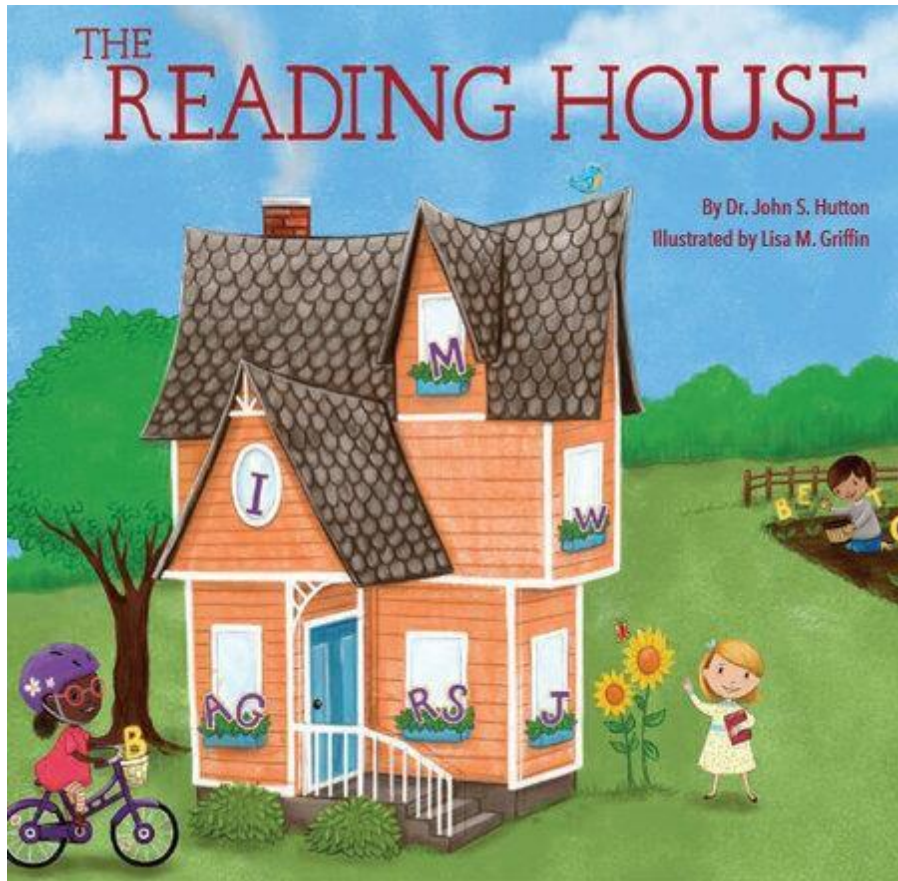
- **Quality of 0-5 experiences**
  - sensitive caregiving
  - linguistically and cognitively stimulating environments
  - protection from stress and adversity
- Intensive **care coordination of developmental services, universal access to preschool**, alterations in parenting behaviors, increase in books and reading in home, access to educational games, and positive interactions between parents
- Guide caregivers in the development of Personalized Literacy Plans

# Primary Care Network



14 Locations

243,000 patients



## Take the Survey of Well-being of Young Children (SWYC™) screening

The SWYC™ is an initial step in assessing children's risk of developmental-behavioral issues (age 0-5 ½). It is FREE and takes 10 minutes or less to complete.

[Start screening! →](#)

- Hired Early Childhood Educators (called KRCs)
- Working in Primary Care Clinics
- Visit & assess during well child visit
- Patients – 3 & 4 years old
- Care Coordination – follow up through linkage

# Personalized Literacy Plan Implementation in the Primary Care Setting: Progress to Date



**1,635** unique patients supported by Kindergarten Readiness Coordinators



**1,206** completed Reading House screenings



**30%** were flagged at risk



**1,441** referrals to early childhood services



**543** confirmed patients links to services



**1,396** at home literacy kits provided

---

Updated through February 2024

# Literacy Kits

Magnetic letters

Practice books  
(basic strokes,  
tracing letters)

Practice ring  
(alphabet,  
numbers, color,  
shapes)

Journal

Scissors

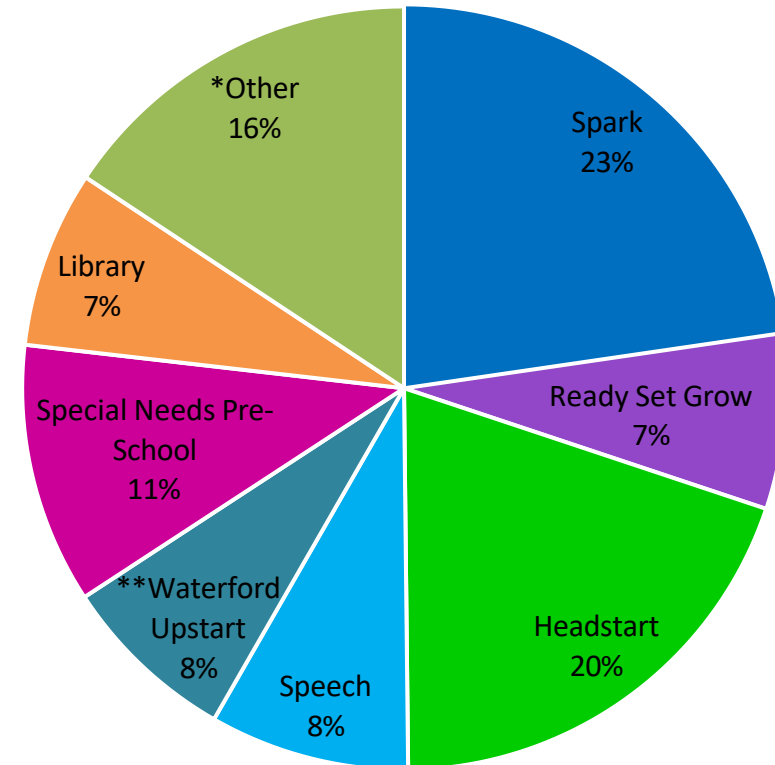
Play-doh

Activity books

Educational  
Learning Links

# Referrals to Early Childhood Resources

- **1,179** patients referred
- **1,431** service referrals
- **46%** of patients referred were confirmed to have linked to at least one service

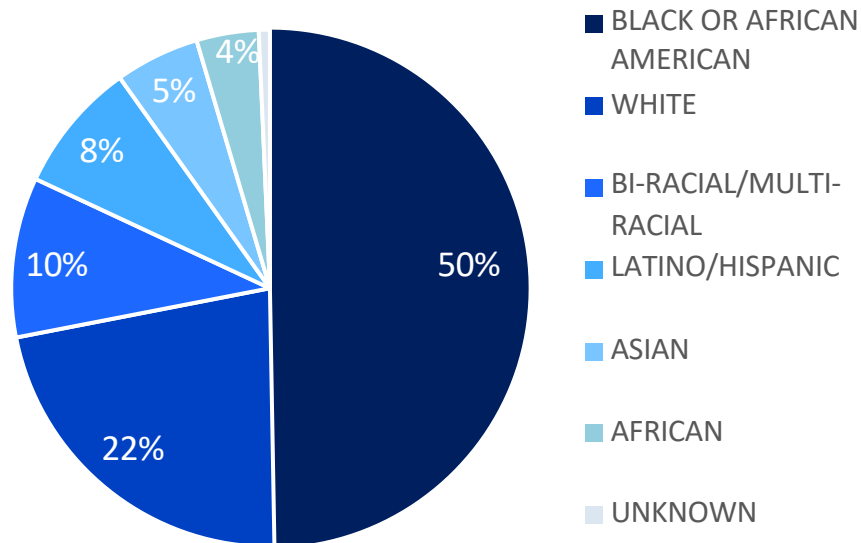


\*Other – Programs such as Imagination Library, Event/program fliers such as CCS Literacy Pathway programs, Autism Learning Partners, Library programs, Marburn Academy's free early reading program.

\*\*Waterford Upstart is an online early-learning program that provides activities for children and tools for caregivers. Children receive a free laptop for access to online learning.

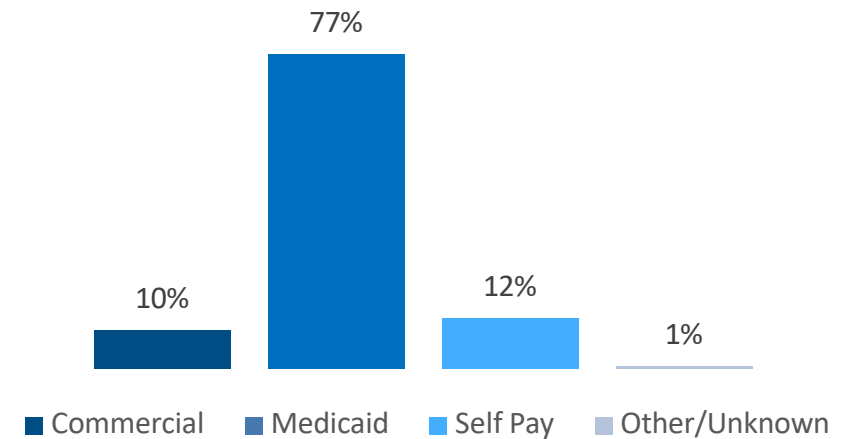
# Patient Population

## Race

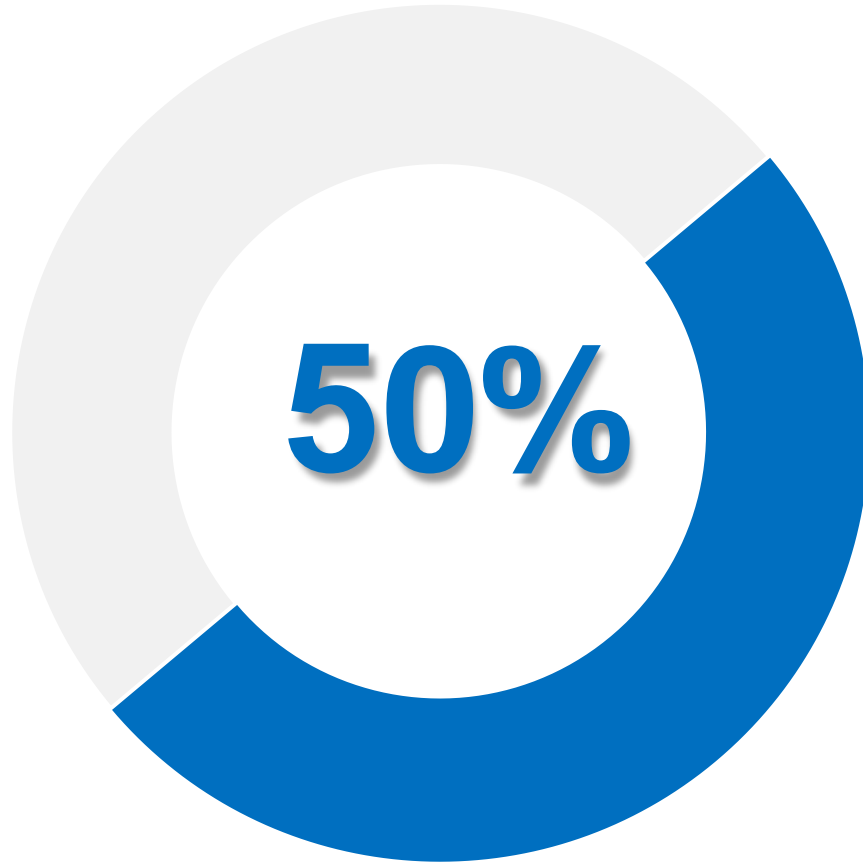


## Insurance

data from 6/2022-2/2024



# Key Insights



About half of the patients who passed the SWYC are flagged by the Reading House.

The Reading House and SWYC are identifying different needs for patients, supporting the usefulness of both tools in the primary care setting.

# Highlights of Program Launch to Date

- ✓ Implementation in 5 primary care clinic workflows
- ✓ 4 Kindergarten Readiness Coordinators
- ✓ Literacy screening outcomes integrated into patient medical records
- ✓ Caregivers buy-in to the Personalized Literacy Plan



# Health happens everywhere.

Learn more about our commitment to healthy schools, healthy homes and healthy neighborhoods.

Visit [NationwideChildrens.org/HealthyKids](http://NationwideChildrens.org/HealthyKids)

ABC



# Meet our Maternal and Young Child Health Panel



**Dr. Tashlai Burney**  
Superintendent of Curriculum & Instruction  
Rise and Shine Academy



**Dr. Mary Kay Irwin**  
Senior Director, School-Based  
Nationwide Children's Hospital



**Rebecca Good, MPA, CHW**  
Pathways HUB Manager



**Dr. April Hille, RN, MSN, DNP**  
Maternal Child Health Supervisor,  
Toledo-Lucas County Health  
Department



**Cherie Sexton, MSN, APRN, PMHS, NCHS**  
Certified Pediatric Nurse Practitioner,  
Nationwide Children's Hospital - Toledo

# Call to Action



# Lunch and Table Discussion



**Roadshow  
LISTENING TOUR**



## Table Discussion Questions



***Please review the questions at  
your tables and discuss.***

# Roadshow *LISTENING TOUR*



# Thank You.

[GroundworkOhio.org](https://GroundworkOhio.org)



@GroundworkOhio

